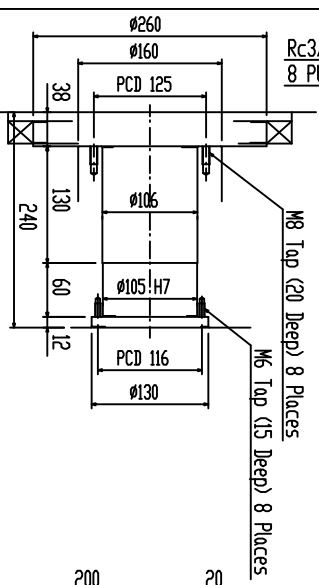
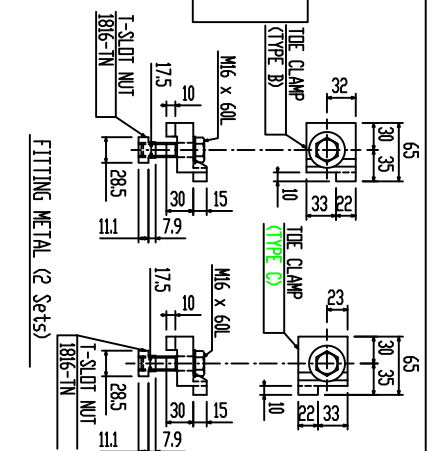
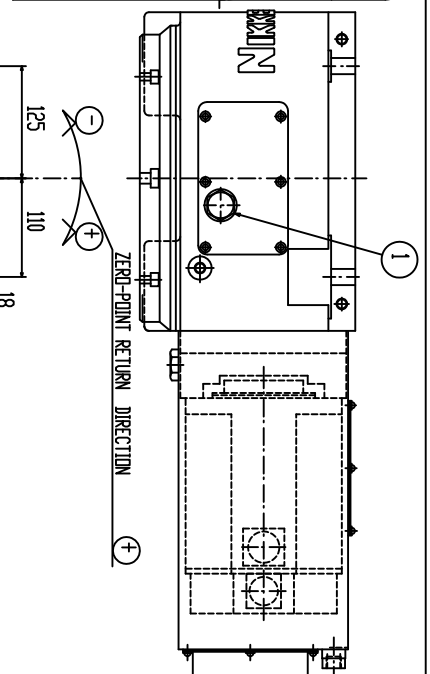
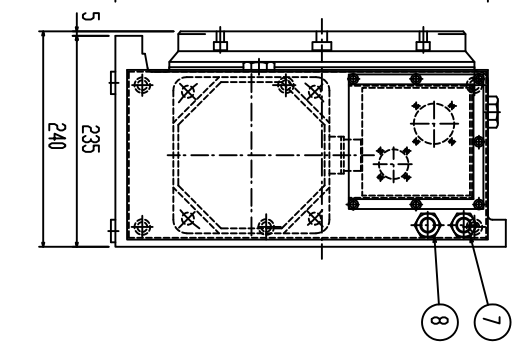
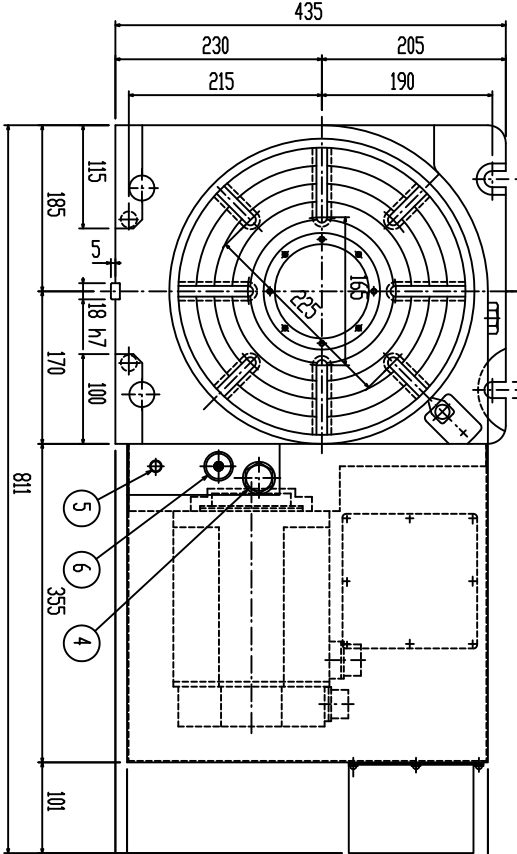
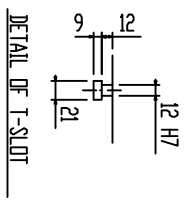
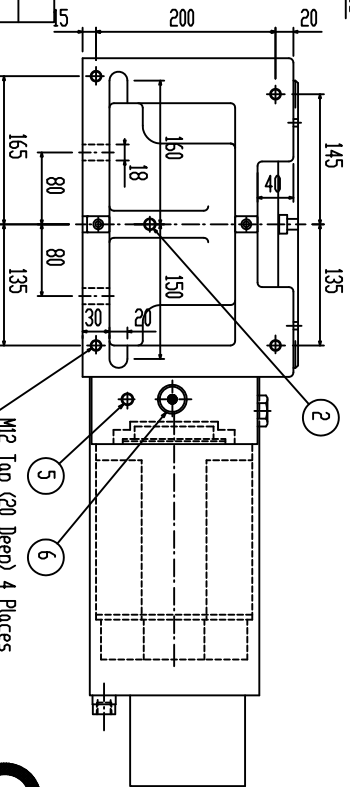


VIEW A



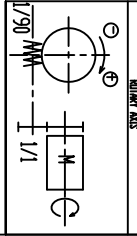
DETAIL OF CENTER BORE



DETAIL OF T-SLOT

1	OIL FILLING PORT FOR BODY (M20 Fine Thread (pitch 2.0 mm))	5	OIL DRAIN PLUG FOR GEAR BOX
2	OIL DRAIN PLUG FOR BODY	6	SIGHT GLASS FOR GEAR BOX
3	SIGHT GLASS FOR BODY	7	HYDRAULIC HOSE CONNECTION (CNC) AMP Rc3/8 Taper Pipe Thread
4	OIL FILLING PORT FOR GEAR BOX (M20 Fine Thread (pitch 2.0 mm))	8	HYDRAULIC HOSE CONNECTION (CLAMP) Rc3/8 Taper Pipe Thread

SPECIFICATIONS	
DIAMETER OF TABLE	φ320 mm
DIAMETER OF SPINDLE NUT	φ105 H7 mm
CENTER HEIGHT	230 mm
WIDTH OF T-SLOT	12 H7 mm
WIDTH OF GUIDE BLOCK	18 h7 mm
INDEXING ACCURACY	20 sec
CLAMPING METHOD	HYDRAULIC
CLAMPING TORQUE	180 kgf·m
NET WEIGHT	200 kg
INERTIA AT MOTOR SHAFT	0.029 kg·cm ²
SERVO MOTOR	FAHUC AC 012
PULSE CODER	55536 PPR 1,000,000 PPR
TOTAL REDUCTION RATIO	1/90
ROTATION SPEED	16.6 rpm
MIN. INCREMENT	0.001°
MAX. LOAD (Ver-head)	250 kg
MAX. LOAD (Horizontal)	500 kg
MAX. CUTTING THRUST	119 kgf·m
MAX. WORK INERTIA	65.3 kg·cm ²



KIND	TITLE	CUSTOMER
MACHINE MODEL	CNC ROTARY TABLE	KS-CNA01R-01
SCALE	CODE NO.	DESIGNED
DATE	CNC 321 FA	Yoshimoto
		Checked
		Uda
		APPROVED
		Kobayashi
		CNC
		DIR-NAME
		IRVING NO.
		TCA-750040/0

NIKKEN KOSAKUSHO WORKS, LTD.